

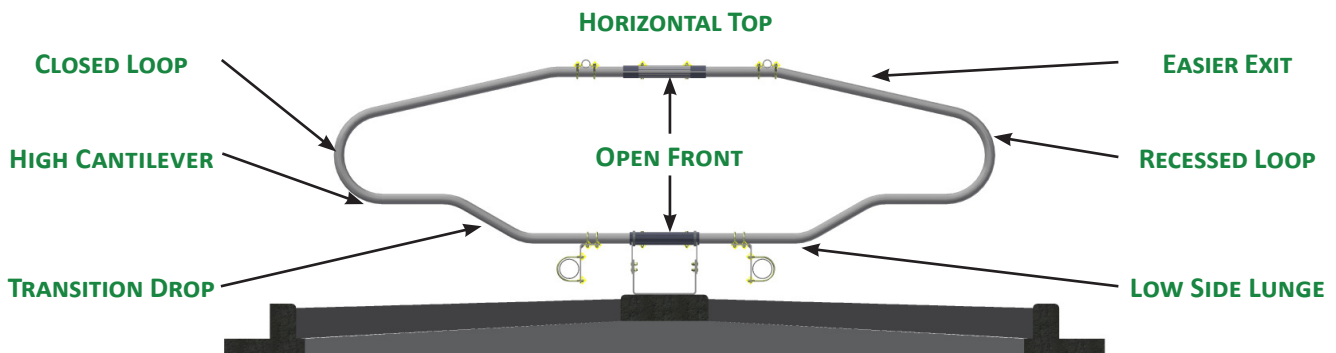
## Y2K Stall Dividers

### Built With Cow Comfort In Mind



When a cow lies down or gets up, she transfers her weight over her front knees creating a point of balance which brings her head down to the ground for lunging forward. Our stall dividers are designed to have an open front, giving her the room needed to lunge forward when lying down or getting up.

Artex stall dividers are designed to provide cows with the freedom they need to rest comfortably, without compromising the features necessary to ensure they lie straight in the stalls. We believe that proper indexing will ensure that stalls are kept clean, and injury are kept to a minimum.



**Closed Loop:** To stop cows from turning around in the stall during exit.

**Horizontal Top:** Allows for shoulder bar length adjustments, without affecting the height.

**Open Front:** Allows cows to enter and lie down comfortably, and rest in natural positions.

**Low Side Lunge:** Allows cows full 360° head movement for sleeping, grooming, and side lunging.

**Recessed Loop:** To stop cows from hitting loops while walking by and from walking on the platform.

**High Cantilever:** Gives more space for the cow's pin bones, thereby providing more space and comfortable rest.

**Easier Exit:** A sloped top allows for cows to turn sooner, thereby reducing the risk of bumping other cows behind them.

**Transition Drop:** Between the high back and low front, this helps the cows to position themselves in a more straight lay down.

## BRISKET BRACKETS

Ask us about our poly pipe briskets and our variety of bracket options.



DIVIDER MOUNTED



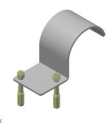
ADJUSTABLE DIVIDER MOUNTED



ANGLED DIVIDER MOUNTED



BOARD DIVIDER MOUNTED



FLOOR MOUNTED