

BioRail Freestall Mounting System

Our Strongest Stall System With the Best Resistance to Torque



The BioRail is our most popular freestall system in the USA. A twin-rail mounting system was designed for versatility, stability, and installation efficiency. It offers a three-point connection, creating a triangle of strength that provides the best resistance to torque and airflow.

Ideal for facilities looking to use sand or compost bedding, the BioRail keeps mounts out of the bedding and is best suited for situations where no, or limited concrete is required in the bedding area.

- No Steel Mounts In Bedding
- Can Mount on Building Columns
- Saves on Labour and Concrete Costs
- Height and Width Adjustments

AVAILABLE LOOP MOUNT TO POST BRACKETS

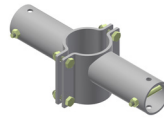
AVAILABLE T-POSTS



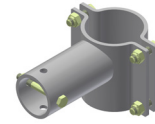
H2H T-POST CONNECTOR



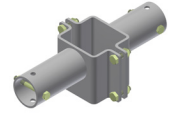
SINGLE T-POST CONNECTOR



H2H CLAMP-ON SLEEVE



SINGLE ROW CLAMP-ON SLEEVE



H2H SQUARE POST MOUNT

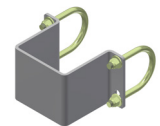
AVAILABLE RAIL MOUNT BRACKETS



SQUARE POST PLATE BRACKET



ROUND MOUNTING CLAMP



SQUARE MOUNTING CLAMP

CHOOSE YOUR LOOP

We offer a wide selection of stall divider options for both mature and young stock



Y2K - MATURE COW



J2K - MATURE JERSEY



H2K - HEIFER YOUNG STOCK



SY2K - MATURE COW